

Effective Entrance Matting

Heavy volumes of dirt and moisture

85% of dirt and moisture in buildings is carried in on the soles of shoes or wheels of trolleys or vehicles.



Some buildings need to deal with higher volumes of dirt and moisture, due to weather or activities in and around the building.



Keeping areas safe and clean depends on how well the entrance matting performs under more extreme conditions.

Open structure: Remove surface dirt & moisture

Open structure entrance matting enables dirt and moisture to drop below the top surface.

This prevents build up on the matting surface, which ensures the next pair of shoes doesn't walk the dirt and moisture further into the premises. It also prevents damage to matting over time, from contaminants.



Appropriate material: Handle external environment

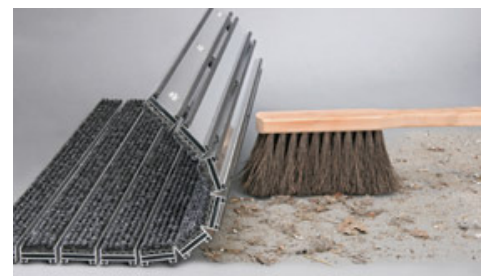


When there are heavy volumes of dirt and moisture in the external environment, the matting strip material should perform the action of brushing and rubbing, to remove both dirt and moisture.

When used with an open structure matting, this pushes the dirt and moisture below the top surface, and stops the top level becoming saturated and dirty.

Lightweight structure: Easy to maintain and clean

It is essential that cleaning can remove the increased volumes of dirt and moisture. To aid this, lightweight, open structure matting should be selected, because the matting will be light enough to only need one person to roll it up and clean underneath.



Direct to waste system: Manage high volumes



Drainage wells that connect directly into the waste system, can be set beneath the entrance matting, to move large volumes of dirt and moisture directly into the sewage system.

The structure of these trays should take into account the width of the entrance area and the weight of traffic, with extra cross bars for strength, where necessary.

Visit www.geggus.co.uk for more information, or call us on 01761 419427 to ask us for advice.